

Discharge Measurement Summary

Site name WCanal9
Site number 01
Operator(s) VAllen
File name WestCanal_20230706_0854.ft
Comment

Start time	7/6/2023 8:54 AM	Sensor type	Top Setting
End time	7/6/2023 10:05 AM	Handheld serial number	FT2H2219029
Start location latitude	42.810	Probe serial number	FT2P2219014
Start location longitude	-118.871	Probe firmware	1.30
Calculations engine	FlowTracker2	Handheld software	1.7

# Stations	Avg interval (s)	Total discharge (m³/s)
28	40	0.8048

Total width (m)	Total area (m²)	Wetted Perimeter (m)
5.151	3.28942	5.632

Mean SNR (dB)	Mean depth (m)	Mean velocity (m/s)
46	0.639	0.2447

Mean temp (°C)	Max depth (m)	Max velocity (m/s)
14.824	0.856	0.3705

Discharge Uncertainty		
Category	ISO	IVE
Accuracy	1.0%	1.0%
Depth	0.1%	0.9%
Velocity	0.2%	2.3%
Width	0.1%	0.1%
Method	0.8%	
# Stations	1.8%	
Overall	2.2%	2.7%

Discharge equation	Mid Section
Discharge uncertainty	IVE
Discharge reference	Rated

Data Collection Settings	
Salinity	0.000 PSS-78
Temperature	-
Sound speed	-
Mounting correction	0.000 %

Summary overview

No changes were made to this file
Quality control warnings



Discharge Measurement Summary

Site name WCanal9
Site number 01
Operator(s) VAllen
File name WestCanal_20230706_0854.ft
Comment

Station Warning Settings

Station discharge OK

Station discharge < 5.00%

Station discharge caution

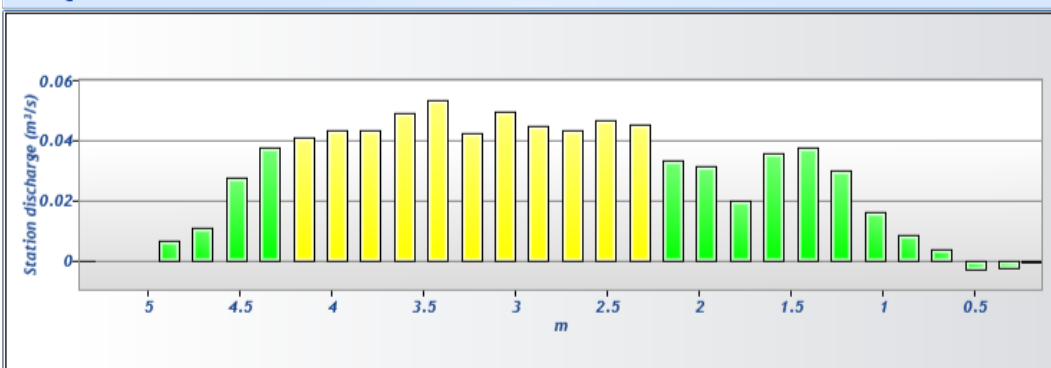
5.00% >= Station discharge < 10.00%

Station discharge warning

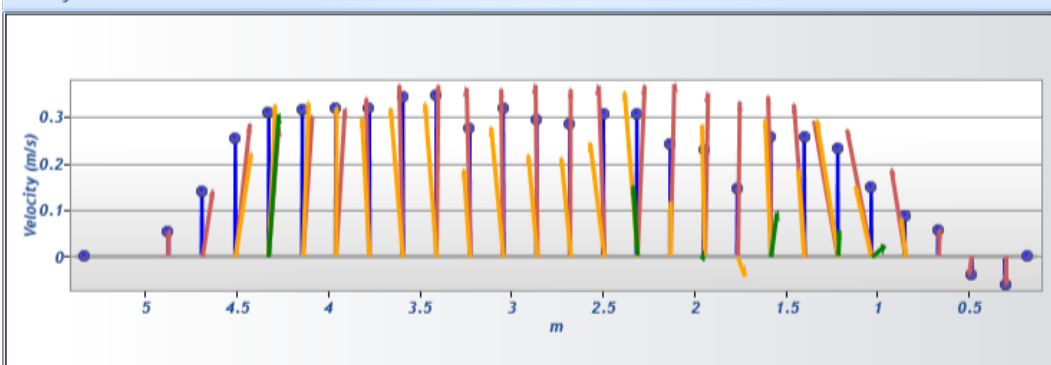
Station discharge >= 10.00%



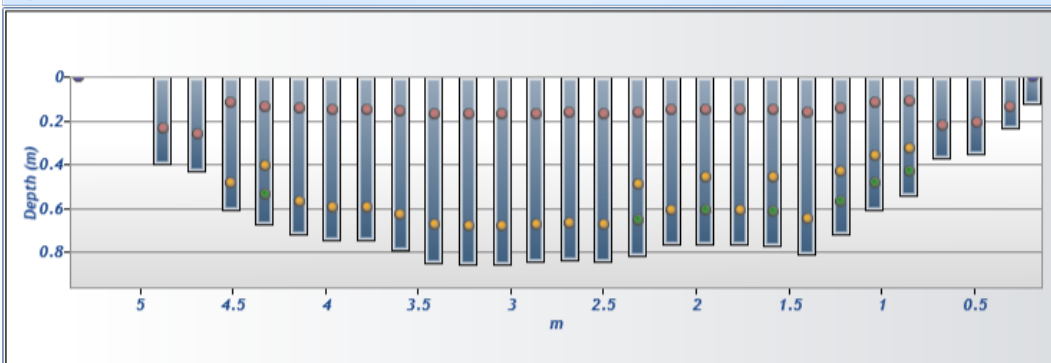
Discharge chart

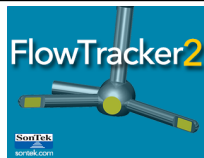


Velocity chart



Depth chart

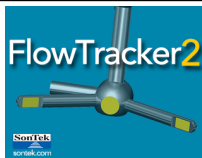




Discharge Measurement Summary

Site name WCanal9
Site number 01
Operator(s) VAllen
File name WestCanal_20230706_0854.ft
Comment

Measurement results															
St#	Time	Location (m)	Method	Depth (m)	%Depth	Measured Depth (m)	Samples	Velocity (m/s)	Correction	Mean Velocity (m/s)	Area (m ²)	Flow (m ³ /s)	%Q		
0	8:54 AM	0.183	None	0.122	0.0000	0.000	0	0.0000	1.0000	-0.0611	0.00743	-0.0005	-0.06	✓	
1	8:55 AM	0.305	0.6	0.232	0.6000	0.139	80	-0.0611	1.0000	-0.0611	0.03530	-0.0022	-0.27	✓	
2	8:57 AM	0.488	0.6	0.354	0.6000	0.212	80	-0.0389	1.0000	-0.0389	0.06466	-0.0025	-0.31	✓	
3	8:59 AM	0.671	0.6	0.369	0.6000	0.221	80	0.0565	1.0000	0.0565	0.06745	0.0038	0.47	✓	
4	9:00 AM	0.853	0.2/0.6/0.8	0.543	0.2000	0.109	80	0.1868	1.0000	0.0877	0.09922	0.0087	1.08	✓	
4	9:00 AM	0.853	0.2/0.6/0.8	0.543	0.6000	0.326	80	0.0821	1.0000	0.0877	0.09922	0.0087	1.08	✓	
4	9:00 AM	0.853	0.2/0.6/0.8	0.543	0.8000	0.434	80	-0.0001	1.0000	0.0877	0.09922	0.0087	1.08	✓	
5	9:04 AM	1.036	0.2/0.6/0.8	0.607	0.2000	0.121	80	0.2725	1.0000	0.1496	0.11093	0.0166	2.06	✓	
5	9:04 AM	1.036	0.2/0.6/0.8	0.607	0.6000	0.364	80	0.1508	1.0000	0.1496	0.11093	0.0166	2.06	✓	
5	9:04 AM	1.036	0.2/0.6/0.8	0.607	0.8000	0.485	80	0.0242	1.0000	0.1496	0.11093	0.0166	2.06	✓	
6	9:07 AM	1.219	0.2/0.6/0.8	0.716	0.2000	0.143	80	0.2912	1.0000	0.2323	0.13099	0.0304	3.78	✓	
6	9:07 AM	1.219	0.2/0.6/0.8	0.716	0.6000	0.430	80	0.2918	1.0000	0.2323	0.13099	0.0304	3.78	✓	
6	9:07 AM	1.219	0.2/0.6/0.8	0.716	0.8000	0.573	80	0.0546	1.0000	0.2323	0.13099	0.0304	3.78	✓	
7	9:11 AM	1.402	0.2/0.8	0.808	0.2000	0.162	80	0.3270	1.0000	0.2567	0.14772	0.0379	4.71	✓	
7	9:11 AM	1.402	0.2/0.8	0.808	0.8000	0.646	80	0.1865	1.0000	0.2567	0.14772	0.0379	4.71	✓	
8	9:14 AM	1.585	0.2/0.6/0.8	0.768	0.2000	0.154	80	0.3442	1.0000	0.2569	0.14047	0.0361	4.48	✓	
8	9:14 AM	1.585	0.2/0.6/0.8	0.768	0.6000	0.461	80	0.2938	1.0000	0.2569	0.14047	0.0361	4.48	✓	
8	9:14 AM	1.585	0.2/0.6/0.8	0.768	0.8000	0.614	80	0.0956	1.0000	0.2569	0.14047	0.0361	4.48	✓	
9	9:18 AM	1.768	0.2/0.8	0.762	0.2000	0.152	80	0.3326	1.0000	0.1451	0.13935	0.0202	2.51	✓	
9	9:18 AM	1.768	0.2/0.8	0.762	0.8000	0.610	80	-0.0425	1.0000	0.1451	0.13935	0.0202	2.51	✓	
10	9:20 AM	1.951	0.2/0.6/0.8	0.765	0.2000	0.153	80	0.3513	1.0000	0.2283	0.13991	0.0319	3.97	✓	
10	9:20 AM	1.951	0.2/0.6/0.8	0.765	0.6000	0.459	80	0.2831	1.0000	0.2283	0.13991	0.0319	3.97	✓	
10	9:20 AM	1.951	0.2/0.6/0.8	0.765	0.8000	0.612	80	-0.0043	1.0000	0.2283	0.13991	0.0319	3.97	✓	
11	9:24 AM	2.134	0.2/0.8	0.762	0.2000	0.152	80	0.3705	1.0000	0.2433	0.13935	0.0339	4.21	✓	
11	9:24 AM	2.134	0.2/0.8	0.762	0.8000	0.610	80	0.1160	1.0000	0.2433	0.13935	0.0339	4.21	✓	
12	9:26 AM	2.316	0.2/0.6/0.8	0.817	0.2000	0.163	80	0.3672	1.0000	0.3054	0.14939	0.0456	5.67	✓	
12	9:26 AM	2.316	0.2/0.6/0.8	0.817	0.6000	0.490	80	0.3525	1.0000	0.3054	0.14939	0.0456	5.67	✓	
12	9:26 AM	2.316	0.2/0.6/0.8	0.817	0.8000	0.653	80	0.1496	1.0000	0.3054	0.14939	0.0456	5.67	✓	
13	9:30 AM	2.499	0.2/0.8	0.841	0.2000	0.168	80	0.3668	1.0000	0.3057	0.15385	0.0470	5.84	✓	
13	9:30 AM	2.499	0.2/0.8	0.841	0.8000	0.673	80	0.2446	1.0000	0.3057	0.15385	0.0470	5.84	✓	
14	9:33 AM	2.682	0.2/0.8	0.835	0.2000	0.167	80	0.3592	1.0000	0.2850	0.15273	0.0435	5.41	✓	
14	9:33 AM	2.682	0.2/0.8	0.835	0.8000	0.668	80	0.2108	1.0000	0.2850	0.15273	0.0435	5.41	✓	
15	9:35 AM	2.865	0.2/0.8	0.844	0.2000	0.169	80	0.3687	1.0000	0.2930	0.15440	0.0452	5.62	✓	
15	9:35 AM	2.865	0.2/0.8	0.844	0.8000	0.675	80	0.2172	1.0000	0.2930	0.15440	0.0452	5.62	✓	
16	9:38 AM	3.048	0.2/0.8	0.856	0.2000	0.171	80	0.3598	1.0000	0.3187	0.15663	0.0499	6.20	✓	
16	9:38 AM	3.048	0.2/0.8	0.856	0.8000	0.685	80	0.2775	1.0000	0.3187	0.15663	0.0499	6.20	✓	
17	9:40 AM	3.231	0.2/0.8	0.853	0.2000	0.171	80	0.3623	1.0000	0.2747	0.15608	0.0429	5.33	✓	
17	9:40 AM	3.231	0.2/0.8	0.853	0.8000	0.683	80	0.1872	1.0000	0.2747	0.15608	0.0429	5.33	✓	
18	9:43 AM	3.414	0.2/0.8	0.847	0.2000	0.169	80	0.3672	1.0000	0.3475	0.15496	0.0539	6.69	✓	
18	9:43 AM	3.414	0.2/0.8	0.847	0.8000	0.678	80	0.3278	1.0000	0.3475	0.15496	0.0539	6.69	✓	
19	9:45 AM	3.597	0.2/0.8	0.789	0.2000	0.158	80	0.3682	1.0000	0.3433	0.14437	0.0496	6.16	✓	
19	9:45 AM	3.597	0.2/0.8	0.789	0.8000	0.632	80	0.3185	1.0000	0.3433	0.14437	0.0496	6.16	✓	
20	9:49 AM	3.780	0.2/0.8	0.747	0.2000	0.149	80	0.3397	1.0000	0.3184	0.13657	0.0435	5.40	✓	
20	9:49 AM	3.780	0.2/0.8	0.747	0.8000	0.597	80	0.2970	1.0000	0.3184	0.13657	0.0435	5.40	✓	
21	9:51 AM	3.962	0.2/0.8	0.747	0.2000	0.149	80	0.3172	1.0000	0.3189	0.13657	0.0436	5.41	✓	
21	9:51 AM	3.962	0.2/0.8	0.747	0.8000	0.597	80	0.3206	1.0000	0.3189	0.13657	0.0436	5.41	✓	
22	9:53 AM	4.145	0.2/0.8	0.716	0.2000	0.143	80	0.3021	1.0000	0.3163	0.13099	0.0414	5.15	✓	
22	9:53 AM	4.145	0.2/0.8	0.716	0.8000	0.573	80	0.3304	1.0000	0.3163	0.13099	0.0414	5.15	✓	
23	9:56 AM	4.328	0.2/0.6/0.8	0.674	0.2000	0.135	80	0.2768	1.0000	0.3085	0.12319	0.0380	4.72	✓	
23	9:56 AM	4.328	0.2/0.6/0.8	0.674	0.6000	0.404	80	0.3259	1.0000	0.3085	0.12319	0.0380	4.72	✓	
23	9:56 AM	4.328	0.2/0.6/0.8	0.674	0.8000	0.539	80	0.3053	1.0000	0.3085	0.12319	0.0380	4.72	✓	
24	9:59 AM	4.511	0.2/0.8	0.607	0.2000	0.121	80	0.2849	1.0000	0.2533	0.11093	0.0281	3.49	✓	
24	9:59 AM	4.511	0.2/0.8	0.607	0.8000	0.485	80	0.2218	1.0000	0.2533	0.11093	0.0281	3.49	✓	
25	10:01 AM	4.694	0.6	0.433	0.6000	0.260	80	0.1410	1.0000	0.07915	0.07915	0.0112	1.39	✓	
26	10:03 AM	4.877	0.6	0.396	0.6000	0.238	80	0.0549	1.0000	0.0549	0.12681	0.0070	0.86	✓	
27	10:05 AM	5.334	None	0.000	0.0000	0.000	0	0.0000	1.0000	0.0549	0.00000	0.0000	0.00	✓	



Discharge Measurement Summary

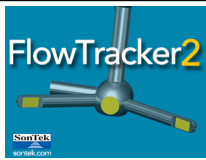
Site name WCanal9
Site number 01
Operator(s) VAllen
File name WestCanal_20230706_0854.ft
Comment

Quality Control Settings

Maximum depth change 50.00%
Maximum spacing change 100.00%
SNR threshold 10 dB
Standard error threshold 0.0100 m/s
Spike threshold 10.00%
Maximum velocity angle 20.0 deg
Maximum tilt angle 5.0 deg

Quality control warnings

St#	Time	Location (m)	Method	Depth (m)	%Depth	Measured Depth (m)	Warnings
1	8:55 AM	0.305	0.6	0.232	0.6000	0.139	Velocity Angle > QC
2	8:57 AM	0.488	0.6	0.354	0.6000	0.212	Velocity Angle > QC
4	9:00 AM	0.853	0.2/0.6/0.8	0.543	0.2000	0.109	Large SNR Variation,Velocity Angle > QC
4	9:00 AM	0.853	0.2/0.6/0.8	0.543	0.6000	0.326	Large SNR Variation,Velocity Angle > QC
4	9:00 AM	0.853	0.2/0.6/0.8	0.543	0.8000	0.434	Large SNR Variation,Velocity Angle > QC
5	9:04 AM	1.036	0.2/0.6/0.8	0.607	0.2000	0.121	Velocity Angle > QC
5	9:04 AM	1.036	0.2/0.6/0.8	0.607	0.6000	0.364	Velocity Angle > QC
5	9:04 AM	1.036	0.2/0.6/0.8	0.607	0.8000	0.485	Velocity Angle > QC
6	9:07 AM	1.219	0.2/0.6/0.8	0.716	0.2000	0.143	Velocity Angle > QC
6	9:07 AM	1.219	0.2/0.6/0.8	0.716	0.6000	0.430	Velocity Angle > QC
6	9:07 AM	1.219	0.2/0.6/0.8	0.716	0.8000	0.573	Velocity Angle > QC
8	9:14 AM	1.585	0.2/0.6/0.8	0.768	0.2000	0.154	Beam SNRs Not Similar,SNR Threshold Variation
8	9:14 AM	1.585	0.2/0.6/0.8	0.768	0.6000	0.461	Beam SNRs Not Similar,SNR Threshold Variation
8	9:14 AM	1.585	0.2/0.6/0.8	0.768	0.8000	0.614	Beam SNRs Not Similar,SNR Threshold Variation
9	9:18 AM	1.768	0.2/0.8	0.762	0.2000	0.152	Velocity Angle > QC
9	9:18 AM	1.768	0.2/0.8	0.762	0.8000	0.610	Velocity Angle > QC
10	9:20 AM	1.951	0.2/0.6/0.8	0.765	0.2000	0.153	Standard Error > QC
10	9:20 AM	1.951	0.2/0.6/0.8	0.765	0.6000	0.459	Standard Error > QC
10	9:20 AM	1.951	0.2/0.6/0.8	0.765	0.8000	0.612	Standard Error > QC
16	9:38 AM	3.048	0.2/0.8	0.856	0.2000	0.171	Approaching Low SNR,Beam SNRs Not Similar,SNR Threshold Variation
16	9:38 AM	3.048	0.2/0.8	0.856	0.8000	0.685	Approaching Low SNR,Beam SNRs Not Similar,SNR Threshold Variation
24	9:59 AM	4.511	0.2/0.8	0.607	0.2000	0.121	Velocity Angle > QC
24	9:59 AM	4.511	0.2/0.8	0.607	0.8000	0.485	Velocity Angle > QC
25	10:01 AM	4.694	0.6	0.433	0.6000	0.260	Velocity Angle > QC
27	10:05 AM	5.334	None	0.000	0.0000	0.000	Stn Spacing > QC,Water Depth > QC



Discharge Measurement Summary

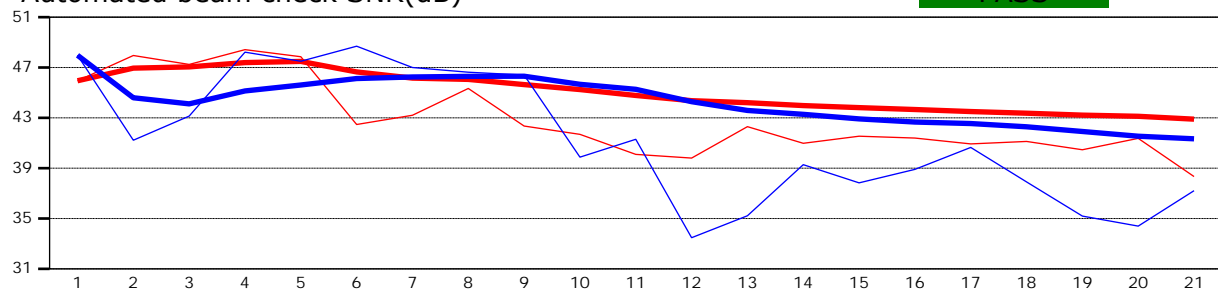
Site name WCanal9
Site number 01
Operator(s) VAllen
File name WestCanal_20230706_0854.ft
Comment

Beam 1	
Beam 2	

Automated beam check Start time 7/6/2023 8:53:56 AM

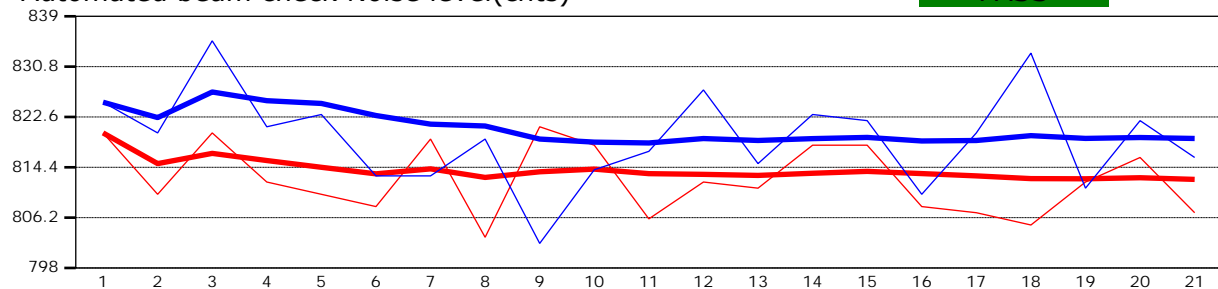
Automated beam check SNR(dB)

PASS



Automated beam check Noise level(cnts)

PASS



Automated beam check Quality control warnings

Peak Location > QC



Discharge Measurement Summary

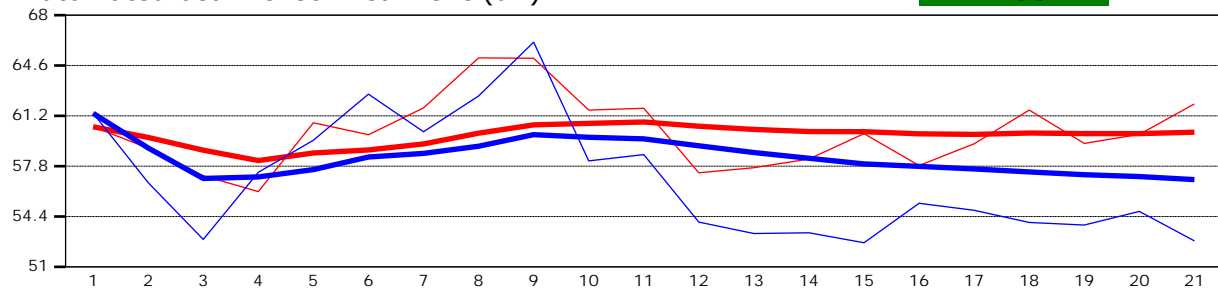
Site name WCanal9
Site number 01
Operator(s) VAllen
File name WestCanal_20230706_0854.ft
Comment

Beam 1	
Beam 2	

Automated beam check Start time 7/6/2023 8:53:56 AM

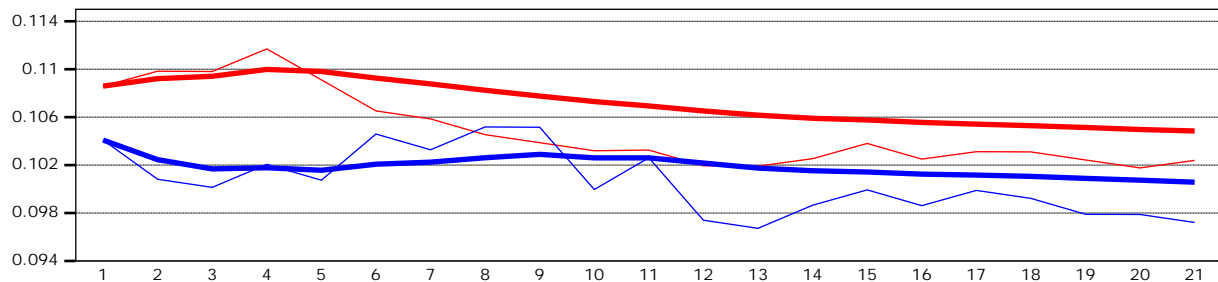
Automated beam check Peak level(dB)

PASS



Automated beam check Peak position(m)

FAIL



Automated beam check Quality control warnings

Peak Location > QC